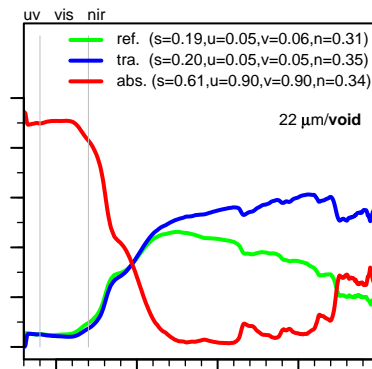
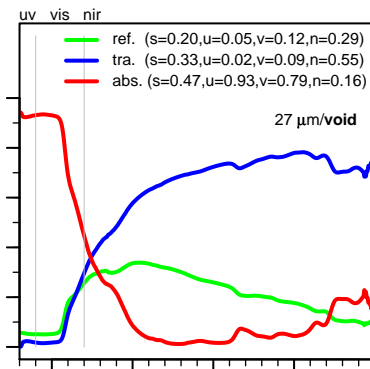
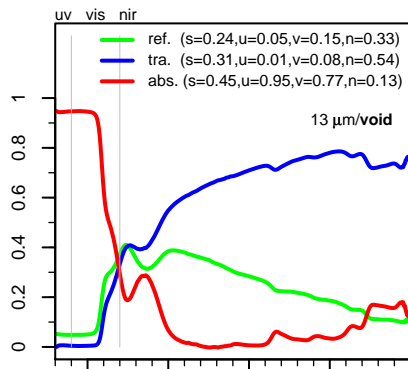
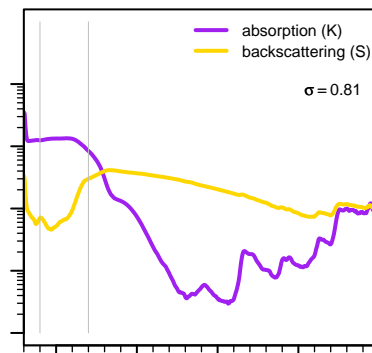
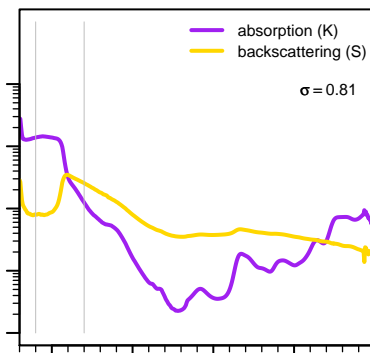
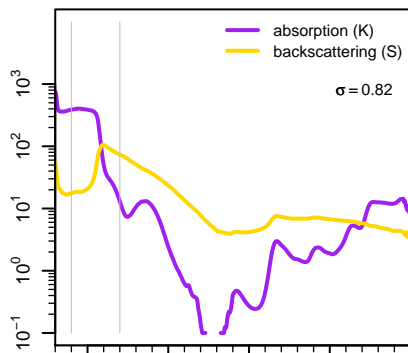


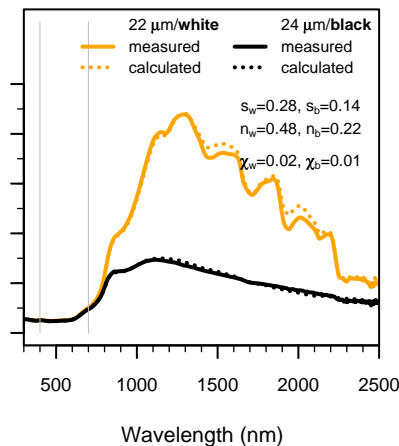
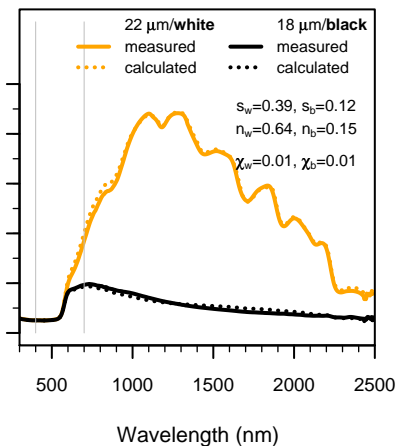
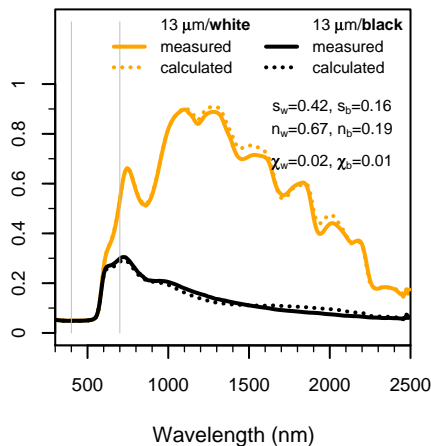
### I. Observed Film Property



### II. K-M Coefficient ( $\text{mm}^{-1}$ )



### III. Observed Film Reflectance



[R03]  
Red Iron Oxide (iii)  
Ferro Red V-13810 (PR 101)  
2.6% PVC; size 0.27  $\mu\text{m}$   
{iron oxide red}

1:1 mixture  
(volume R03:volume B11 = 1:1)

[B11]  
Chromium Iron Oxide (ii)  
Shepherd Black 411 (PBr 29)  
2.8% PVC; size 0.6  $\mu\text{m}$   
{chromium iron oxide selective black}