

# Paliogen® Schwarz L 0086

## Paliogen® Black L 0086

Perylschwarzpigment für infrarotreflektierende Lacke

Perylene black pigment for infrared reflecting paints

1



Vollton  
Full shade

### Chemische Struktur

#### Chemical Nature:

**Perylschwarz**  
**C.I. Pigment Schwarz 32**  
**Perylene Black**  
**C.I. Pigment Black 32**  
**Color Index No. 71 133**

### Physikalische Form

#### Physical Form:

Pulver/powder

### Physikalische Daten

#### Physical Data:

pH-Wert  
pH-value 7 – 10

Leitfähigkeit  
Conductivity < 200 µS/cm

Dichte  
Density 1.50 g/cm<sup>3</sup>

Spez. Oberfläche (BET)  
Spec. Surface (BET) 39 m<sup>2</sup>/g

1 : 4,0 TiO<sub>2</sub>  
1/3 Standardfarbtiefe  
1/3 standard depth  
of shade

2



### Chemikalienbeständigkeit

#### Chemical Resistance:

HCL 2% 5  
NaOH 2% 5

1 : 12,2 TiO<sub>2</sub>  
1/9 Standardfarbtiefe  
1/9 standard depth  
of shade

3



### Temperaturbeständigkeit

#### Heat Stability:

200 °C

### Wetterbeständigkeit

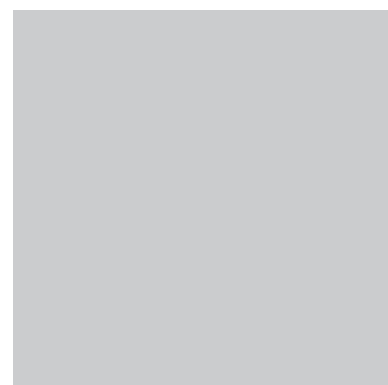
#### Weather Fastness:

Farbton/shade	1	2	3	4
Alkyd-/Melamin alkyd/melamine	4	3		2-3
Acryl-/Melamin acrylic/melamine	4	3		2-3

2-Schicht Metallic-Lack  
Two coat metallic

1 : 47,2 TiO<sub>2</sub>  
1/25 Standardfarbtiefe  
1/25 standard depth  
of shade

4

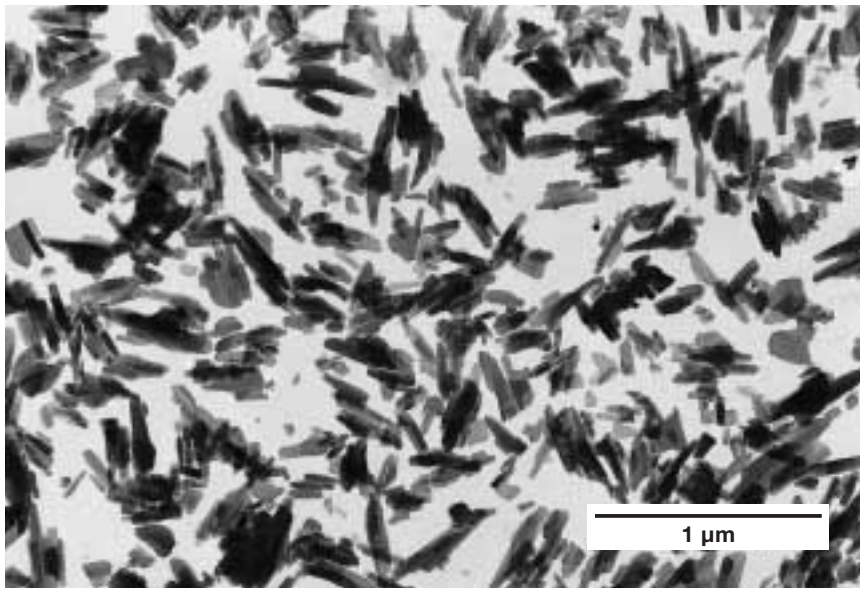


### Überlackiererechtheit

#### Fastness to Overcoating:

4-5

**BASF**



**Lösemittlechtheit  
Fastness to Solvents**

Ethanol/Ethanol	2-3
Butylacetat/Butylacetate	5
Methylethylketon/Methyl Ethyl Ketone	2-3
Xylol/Xylene	4
Testbenzin/Mineral Spirit	5
Solvenon PM	4

**Empfohlene Einsatzgebiete  
Suitable for:**

Einbrenn-System/Baking systems	+
Wässrige Systeme/Waterborne systems	+
Acryl-Isocyanat-Systeme/Acrylic-isocyanate systems	+
Säurehärtende Systeme/Acid curing systems	+
Aminhärtende Systeme/Amine curing systems	+
Physikalisch-oxidativ trocknende Systeme/Airdrying systems	+

- + suitable
- o limited suitability
- not suitable

MB/P 060 d, e  
 December 1999

The above data will be warranted by us. These data, however, as well as the properties of any product samples do not imply any legally binding assurance of certain properties or of suitability for a specific purpose so that any liability for damages cannot be derived therefrom.



## Reflection Curve of Paliogen Black L 0086

### 1:1 and 1:10 White Reductions

Reflection curve in alkyd-melamine stoving finish

